

HIGH END CONCENTRIC POWER PLATE

High-end wall power socket plate

Design registration No.114983 Intellectual-property-rights registration No.171645



CPP-2SZ/HG

<Exploded view>



CPP-2SZ

CPP-2SZ/S

CPP-4SZ/S

Mains power environment has great influence on sound quality, and based on the fact many power supply care products are available on the market. Although the power supply has come under the spotlight now in the audio world, the plate of a wall socket precedes its cosmetic design, functionality, etc. and none is truly accepted as an audio grade. Moreover, the plate of the power supply tap and the upstream wall socket tends to be disregarded in spite that there are various grades of power supply taps. The primary role of the plate in audio is to reduce effectively EMI and RFI noise, the power supply noise mixed in due to the outer skin effect. Among many products such as power supply cables and taps appealing their noise reduction effect, we aim at "one step further!" with our products. The special aluminum alloy for airplanes is sumptuously machined with a depth of 25mm (10mm) to perfectly delete noise mixing from the plug.

Easily exchangeable alloy plate amazingly improving sound quality.

Noise is induced from the power supply. Ideally the noise should be thoroughly guided by the fundamental wall socket at the beginning. Our wall socket adopts material carefully selected from many kinds of metal so that it may correspond to all noises and prevent them from mixing in to the maximum extent.

Two-output ultra low noise type CPP-2SZ/HG (40mm)

Size / 70mmx120mmx40mm (W/H/D)
Weight / approx. 1,010g

Two-output super low noise type CPP-2SZ (30mm)

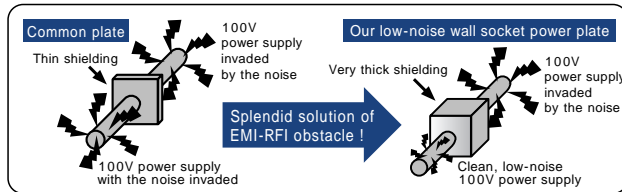
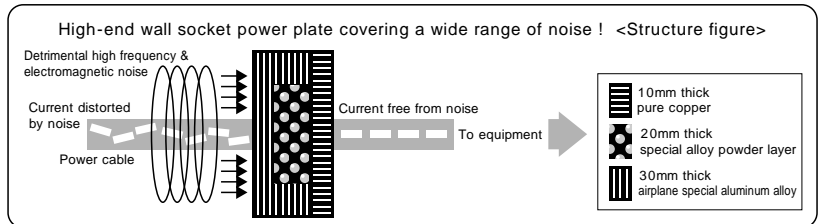
Size / 70mmx120mmx30mm (W/H/D)
Weight / approx. 450g

Two-output slim low noise type CPP-2SZ/S (15mm)

Size / 70mmx120mmx15mm (W/H/D)
Weight / approx. 220g

Four-output slim low noise type CPP-4SZ/S (15mm)

Size / 120mmx120mmx15mm (W/H/D)
Weight / approx. 340g



Installation compatible model
PAD (Leviton), Hubbell,
Meiko Co., Wattgate
etc... Only for UL
Notes
Attachment screws are
not included. Use the
ones supplied with the
original wall socket.

Specification table

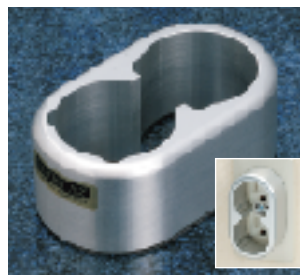
	CPP-2SZ/HG	CPP-2SZ	CPP-2SZ/S	CPP-4SZ/S
Airplane aluminum alloy case				
Machined structure				
Wall socket power plate structure	40mm	30mm	15mm	15mm
Noise guide (special copper alloy plate layer)		-	-	-
Noise guide (special alloy powder layer)		-	-	-
ULTRA SZ physical processing				



Inlet cover CPC-IEC39SZ

The inlet cover shuts out noise mixing from inlet and holds firmly the plug to prevent it from being pulled out. Special alloy powder built inside absorbs electromagnetic wave and high frequency noise, realizing open sound field with high S/N ratio. It can be easily mounted also on a power supply tap and/or audio equipment of other manufacturers.

Material / special aluminum alloy for airplanes Super-high density special alloy powder
Forming / CNC machined Specification / ULTRA SZ physical processing
Size / full length 60mm x outer diameter 69 (inner diameter 39)
Accessories / two M3 stainless-steel screws for tightening



Wall socket plug cover CPC-35SZ

With this plug cover the plate for noise interception can be mounted more easily. All you have to do is to stick it on the surface of a power supply tap or a wall socket, regardless of its kind. In most cases the plug cover can be used also in the place where mounting is difficult.

Material / special aluminum alloy for airplanes (35mm)
Forming / CNC machined Specification / ULTRA SZ physical processing
Size / 93mmx54mmx35mm (height x width x depth)
Mounting method / 1mm thick double-sided adhesive tape supplied Weight / approx. 175g

HIGH END SUPER CONCENTRIC BASE

High-end super wall socket base



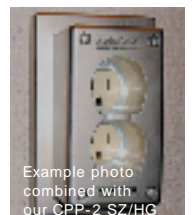
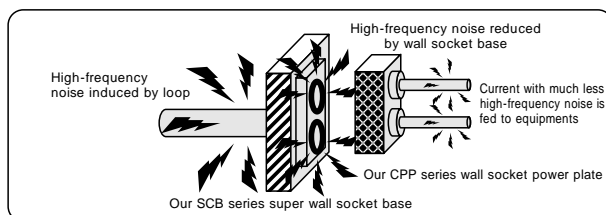
SCB-2SZ

SCB-4SZ

Although the barrier property of aluminum is very good in respect of the high frequency characteristic, the circumference of a power supply involves a wide range of noise, so we pursued an ideal barrier property in a range lower than aluminum. The special copper alloy we chose has excellent vibration characteristics which are also good enough to serve as an insulator. The wall socket base realizes a high S/N ratio as well as vivid sound image with extended range and depth full of reality. We recommend using the socket base in combination with our CPP series wall socket power plate further to improve the sound quality.

The super wall socket base of an ideal

Fixing a wall socket firmly with our socket base has a great influence on the sound quality. Furthermore, giving consideration to material, we adopted the material which is effective against vibration and also excellent in the noise barrier property.



Example photo combined with our CPP-2SZ/HG

SCB-2SZ

Material / special copper alloy
Forming / machined
Specification / ULTRA SZ physical processing
Size / 100mmx150mmx15mm (W/H/D)
Weight / 1.8kg
Accessory / cryogenic stainless steel fixing screw

SCB-4SZ

Material / special copper alloy
Forming / machined
Specification / ULTRA SZ physical processing
Size / 150mmx150mmx15mm (W/H/D)
Weight / 2.4kg
Accessory / cryogenic stainless steel fixing screw